

AIRCRAFT WARNING LIGHTS

LOW INTENSITY EXPLOSION PROOF OBSTRUCTION LIGHT LIOL - A - Ex / LIOL - B - Ex



AWL - LIOL - Ex



AIRCRAFT WARNING LIGHTS

LIOL - A - Ex / LIOL - B - Ex

KEY FEATURES

- Based on LED technology
- RED steady burning light
- >10 cd LIOL - A
- >32 cd LIOL - B
- Long life time >10+ years life expectancy
- Low consumption Stabilised light output
- Lightweight and compact
- Low wind load factor
- Easy to install
- No RF-radiations
- Ex Certificate: CESA 13ATEX037
- ATEX execution: II 2GD Exde IIC T6 Gb
Ex tb IIIC T67°C Db IP66

OPTICAL FEATURES

- Cd emission @ +6° and +10°
- Horizontal beam radiation 360°
- Vertical beam spread >10°
- Optical reflector

OPTIONS

- Twin version: two galvanically separate circuits
- Fault alarm
- Infrared available
- Automatic changeover from normal to backup light

ELECTRICAL FEATURES

- Power Supply AC or DC
- Power consumption LIOL-B: 4W
- LED feeded at constant current

MECHANICAL FEATURES

- Painted RAL 7035 aluminium body
- Borosilicate Glass Dome
- Degree of protection: IP66
- Operating temperature: -20°C/-50°C to +55°C
- Storage temperature: -50°C to +60°C
- Lamp unit weight: 6kg

APPLY TO

- Stack - Chimney - Tower crane - Flare
- Offshore Platform
- Chemical and Petrochemical Plant

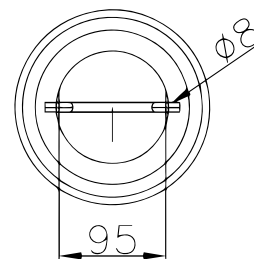
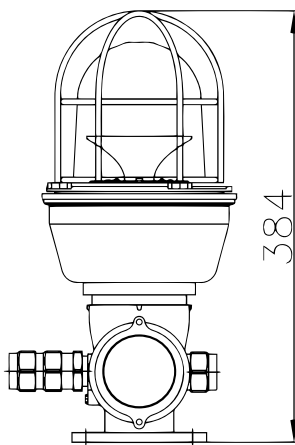
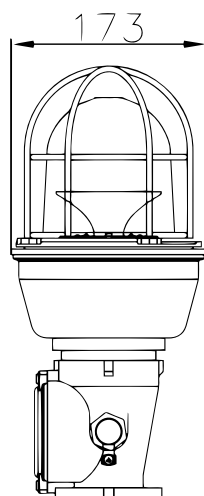
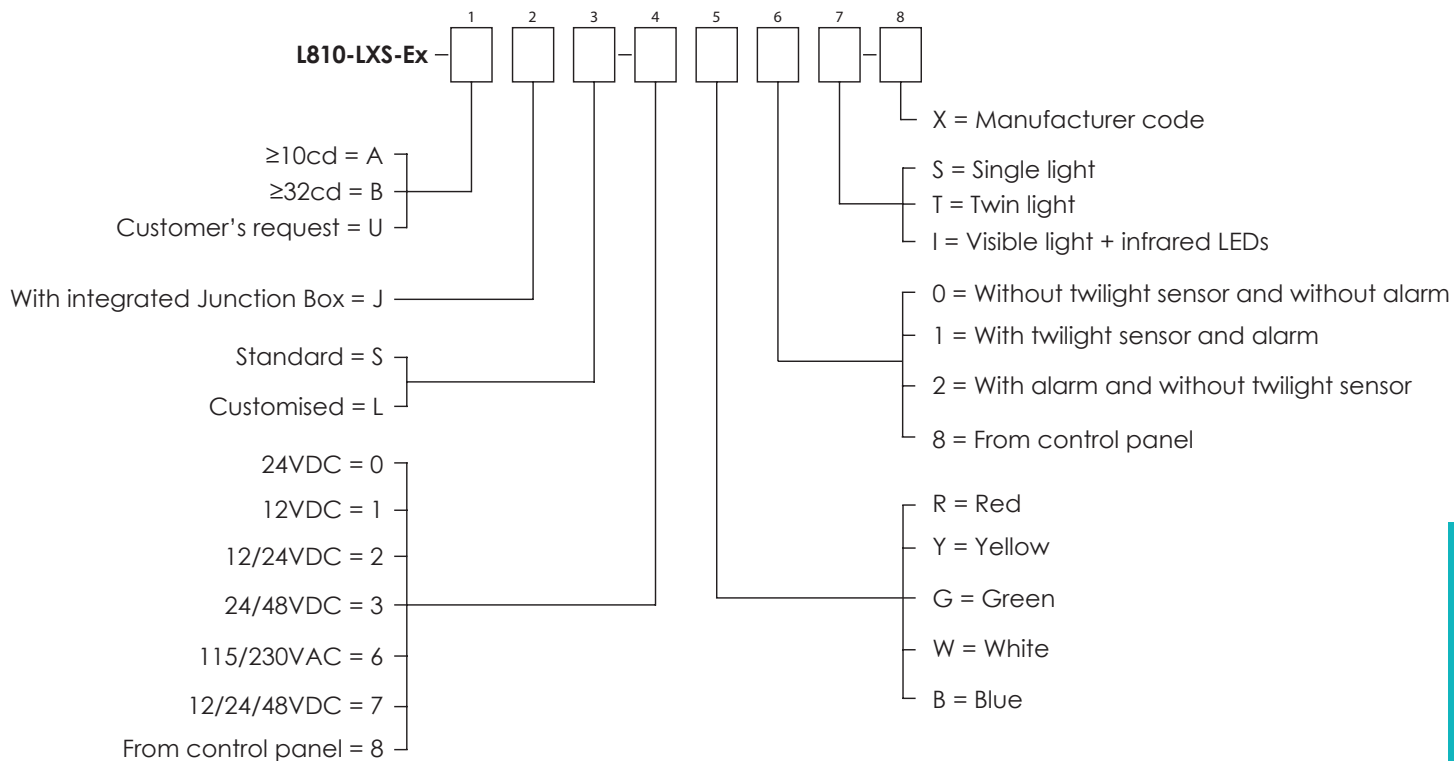
INTERNATIONAL REGULATION

- ICAO Aerodromes -Annex 14 Volume 1, 6th Edition, July 2013 Chapter 6:
Low intensity, Type A-B steady burning obstacle light
- FAA AC150/5345-43F E.B. #67 Lamp type L-810
- DGAC/STAC approval nr. 2013A048
- CE marking
- ATEX

AIRCRAFT WARNING LIGHTS

LIOL - A - Ex / LIOL - B - Ex

Order code

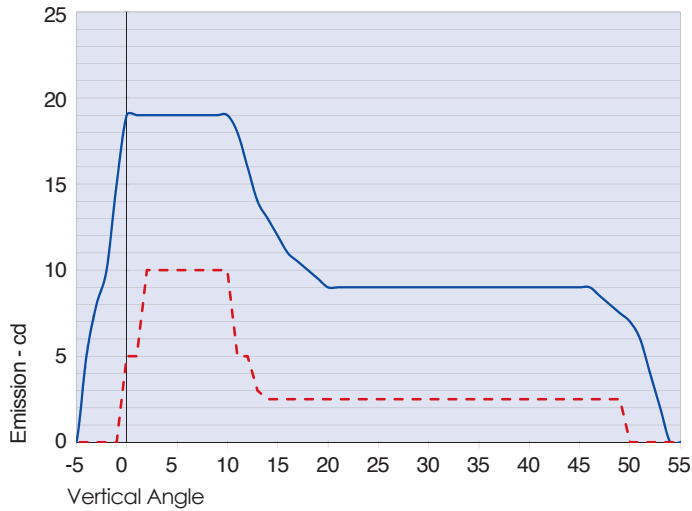


FIXING DIMENSIONS

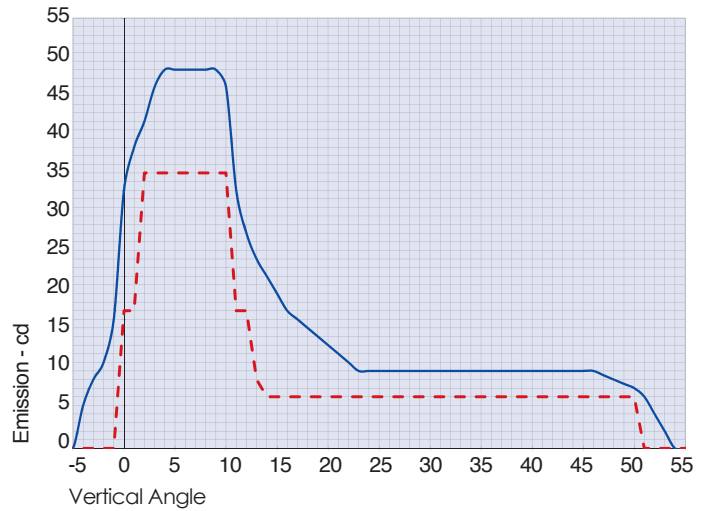
AWL - LIOL - Ex

AIRCRAFT WARNING LIGHTS

LIOL - A - Ex / LIOL - B - Ex



— L810-LXS-A average emission level
 - - ICAO ANNEX 14 low intensity type A Minimum Required Intensity



— L810-LXS-B average emission level
 - - ICAO ANNEX 14 low intensity type B Minimum Required Intensity

AWL - LIOL - Ex

CERTIFICATIONS



FEATURES



TYPICAL APPLICATION

